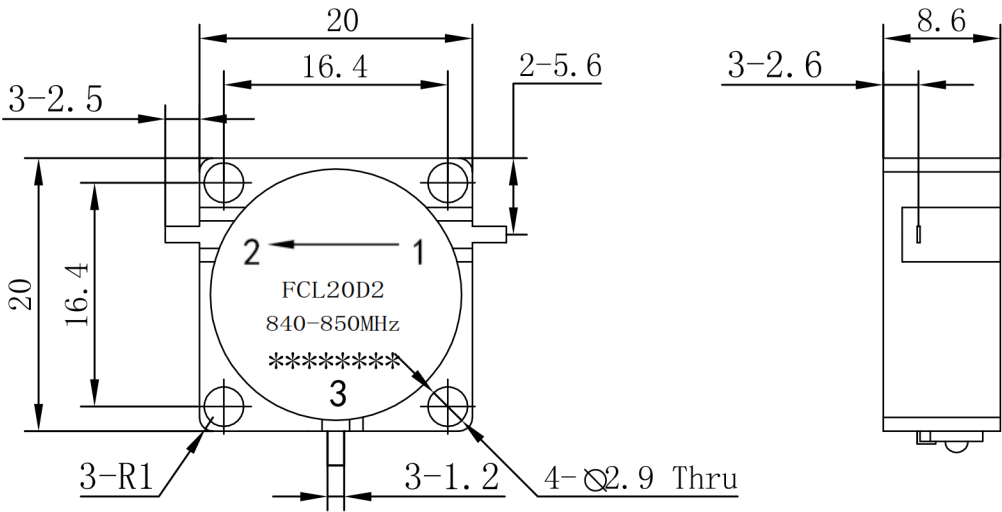




Drop-in Circulator

FCL20D2 840-850MHz



Note:  
1.Tolerances:  $\pm 0.20\text{mm}$   
2.Material  
  BODY: Steel  
  TAB: BeCu  
3.Surface Treatment  
  BODY: Nickel plate  
  TAB: Silver Plated

Item	Unit	Specification	Note
Freq.Range	MHz	840-850	
Direction		CCW/Left	
Operating Temperature	℃	-25~+70	
Insertion Loss	dB max	0.30	Room Temp (+25℃±10℃)
	dB max	0.30	Over Temp (-25℃~+70℃)
Isolation	dB min	23	Room Temp (+25℃±10)
	dB min	23	Over Temp (-25℃~+70℃)
VSWR	MAX	1.20	Room Temp (+25℃±10)
	MAX	1.20	Over Temp (-25℃~+70℃)
Avg Power	W	50	
Impedance	Ω	50	

Customer suggestion and confirmation:

Signature:                      Date:

Design: Colin	Format	Scale	Version
	A4	1:1	A
Date: 2019.3.4	Page 1,Total 1		
			Unit: mm

www.winnsky.com