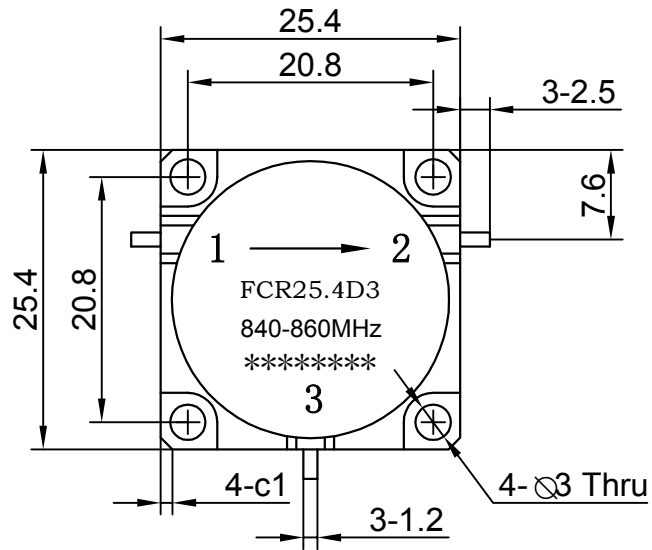




Drop-in Circulator

FCR25.4D3 840-860MHz



- Note:
- 1.Tolerances:  $\pm 0.20\text{mm}$
  - 2.Material  
BODY: Steel  
TAB: BeCu
  - 3.Surface Treatment  
BODY: Nickel plate  
TAB: Silver Plated

Item	Unit	Specification	Note
Freq.Range	MHz	840-860	
Direction		CW/Right	
Operating Temperature	°C	-40~+85	
Insertion Loss	dB max	0.50	Room Temp (+25°C ± 10°C)
	dB max	0.50	Over Temp (-40°C ~ +85°C)
Isolation	dB min	30	Room Temp (+25°C ± 10)
	dB min	25	Over Temp (-40°C ~ +85°C)
Return Loss	dB min	25	Room Temp (+25°C ± 10)
	dB min	25	Over Temp (-40°C ~ +85°C)
Avg Power	W	100	
Impedance	Ω	50	

Customer suggestion and confirmation:

Signature:

Date:

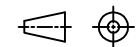
Design: Colin

Format    Scale    Version

A4            1:1            A

Date: 2016.7.11

Page 1, Total 1



Unit: mm

www.winnsky.com