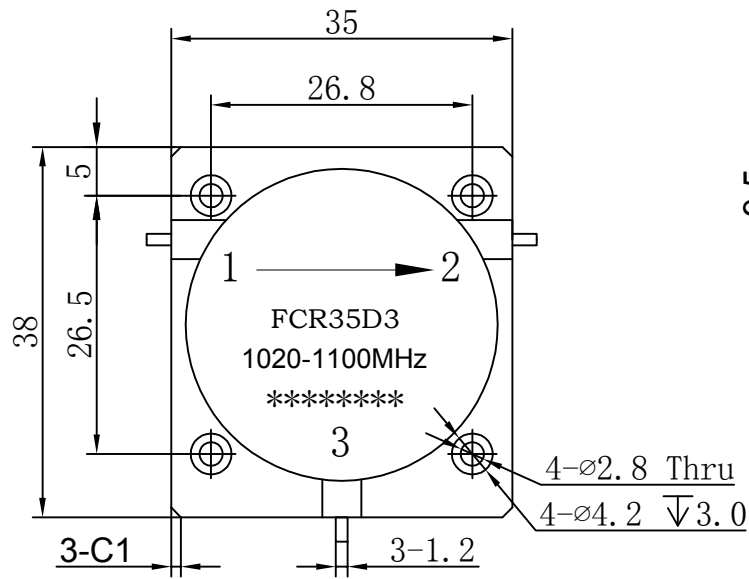




Drop-in Circulator

FCR35D3 1020-1100MHz



Note:

- 1.Tolerances: ± 0.20 mm
- 2.Material
BODY: Steel
TAB: BeCu
- 3.Surface Treatment
BODY: Nickel plate
TAB: Silver Plated

Item	Unit	Specification	Note
Freq.Range	MHz	1020-1100	
Direction		CW/Right	
Operating Temperature	°C	-40~+85	
Insertion Loss	dB max	0.35	Room Temp (+25°C \pm 10°C)
	dB max	0.45	Over Temp (-40°C~+85°C)
Isolation	dB min	21	Room Temp (+25°C \pm 10)
	dB min	20	Over Temp (-40°C~+85°C)
Return Loss	dB min	21	Room Temp (+25°C \pm 10)
	dB min	20	Over Temp (-40°C~+85°C)
Avg Power	W	300	
Impedance	Ω	50	

Customer suggestion and confirmation:

Signature:

Date:

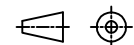
Design: Colin

Format Scale Version

A4 1:1 A

Date: 2016.7.11

Page 1, Total 1



Unit: mm

www.winnsky.com