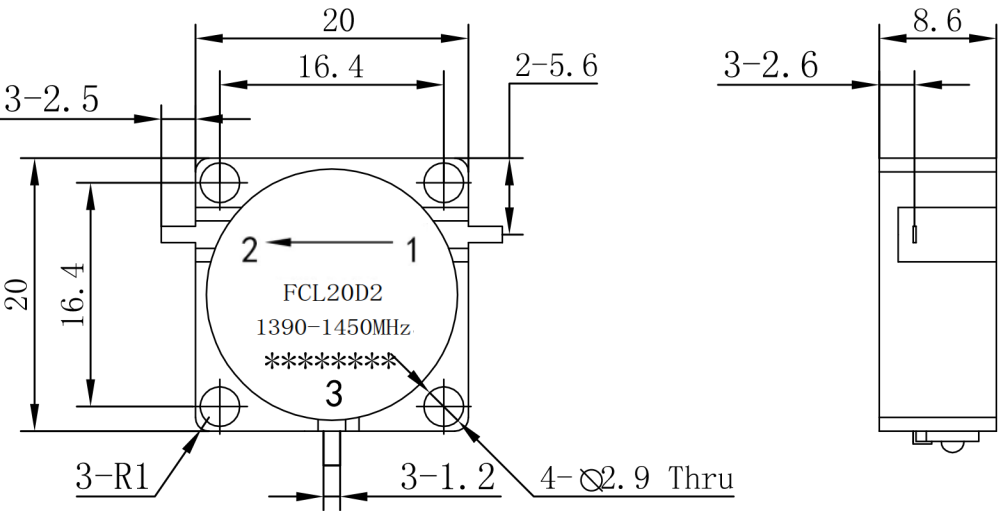




Drop-in Circulator

FCL20D2 1390-1450MHz



Note:
1.Tolerances: $\pm 0.20\text{mm}$
2.Material
BODY: Steel
TAB: BeCu
3.Surface Treatment
BODY: Nickel plate
TAB: Silver Plated

Item	Unit	Specification	Note
Freq.Range	MHz	1390-1450	
Direction		CCW/Left	
Operating Temperature	°C	-25~+70	
Insertion Loss	dB max	0.40	Room Temp (+25°C ± 10°C)
	dB max	0.40	Over Temp (-25°C ~+70°C)
Isolation	dB min	20	Room Temp (+25°C ± 10)
	dB min	20	Over Temp (-25°C ~+70°C)
VSWR	MAX	1.20	Room Temp (+25°C ± 10)
	MAX	1.20	Over Temp (-25°C ~+70°C)
Avg Power	W	50	
Impedance	Ω	50	

Customer suggestion and confirmation:

Signature: Date:

Design: Colin	Format	Scale	Version
	A4	1:1	A
Date: 2019.3.4	Page 1,Total 1		
			Unit: mm

www.winnsky.com