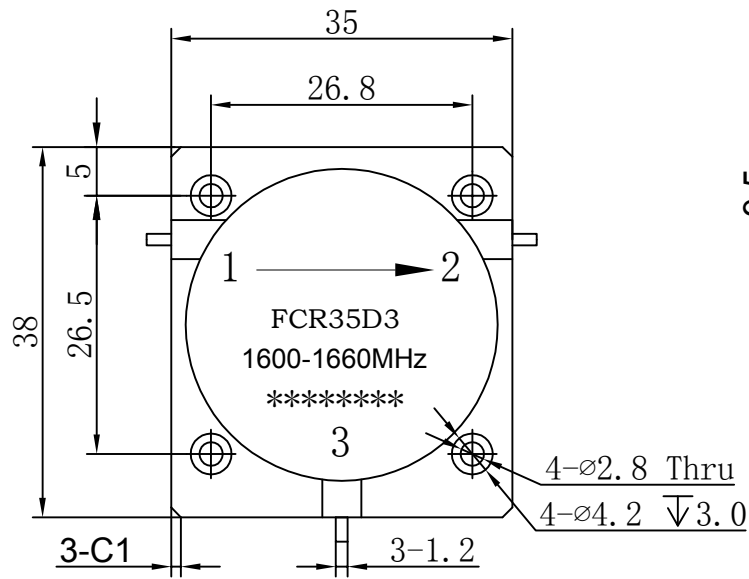




Drop-in Circulator

FCR35D3 1600-1660MHz



- Note:
- 1.Tolerances: ±0.20mm
 - 2.Material
BODY: Steel
TAB: BeCu
 - 3.Surface Treatment
BODY: Nickel plate
TAB: Silver Plated

Item	Unit	Specification	Note
Freq.Range	MHz	1600-1660	
Direction		CW/Right	
Operating Temperature	°C	-40~+85	
Insertion Loss	dB max	0.18	Room Temp (+25°C ± 10°C)
	dB max	0.18	Over Temp (-40°C ~ +85°C)
Isolation	dB min	23	Room Temp (+25°C ± 10)
	dB min	23	Over Temp (-40°C ~ +85°C)
Return Loss	dB min	23	Room Temp (+25°C ± 10)
	dB min	23	Over Temp (-40°C ~ +85°C)
Avg Power	W	500	
Impedance	Ω	50	

Customer suggestion and confirmation:

Signature:

Date:

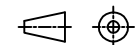
Design: Colin

Format Scale Version

A4 1:1 A

Date: 2020.1.5

Page 1, Total 1



Unit: mm

www.winnsky.com