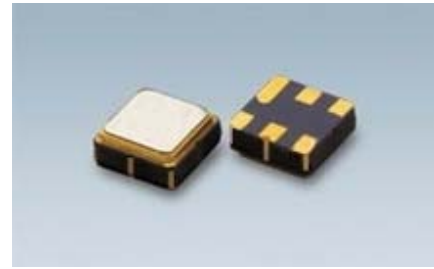


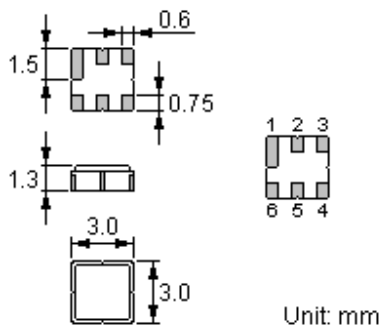
Features

- Low-loss RF filter for mobile systems
- Low amplitude ripple
- No matching network required for operation at 50Ω
- Ceramic package for **Surface Mounted Technology (SMT)**
- Lead-free production and **RoHS** compliant



Package Dimensions

Ceramic Package: **DCC6C**



Pin Configuration

| | |
|------------|--------|
| 2 | Input |
| 5 | Output |
| 1, 3, 4, 6 | Ground |

Marking



Top View, Laser Marking

- "ND": Manufacturer's mark
- "F": SAW filter
- "9339": Part number
- ".": Terminal 1
- "*": Lot number (The code shown below varies in a 4-year cycle)

| Code | 1 | 2 | 3 | 4 | 5 | 6 | 7 | 8 | 9 | 10 | 11 | 12 |
|------|---|---|---|---|---|---|---|---|---|----|----|----|
| 2011 | a | b | c | d | e | f | g | h | i | j | k | m |
| 2012 | n | p | q | r | s | t | u | v | w | x | y | z |
| 2013 | A | B | C | D | E | F | G | H | J | K | L | M |
| 2014 | N | P | Q | R | S | T | U | V | W | X | Y | Z |

Maximum Ratings

| Rating | | Value | Unit |
|-----------------------------|-----------|-----------|------|
| Input Power Level | P | 15dBm | dBm |
| DC Voltage | V_{DC} | 9 | V |
| Operating Temperature Range | T_A | -40 ~ +85 | °C |
| Storage Temperature Range | T_{stg} | -40 ~ +85 | °C |
| ESD-HBM for all pin | E_{SD} | 150 | V |

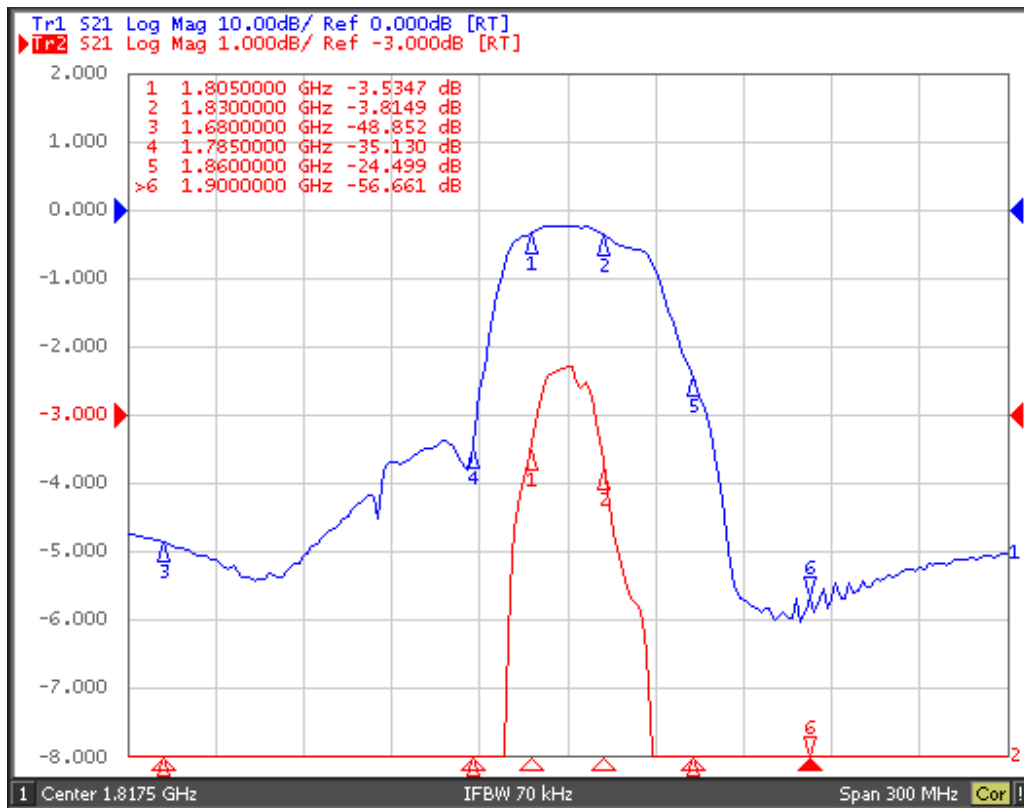
Electrical Characteristics

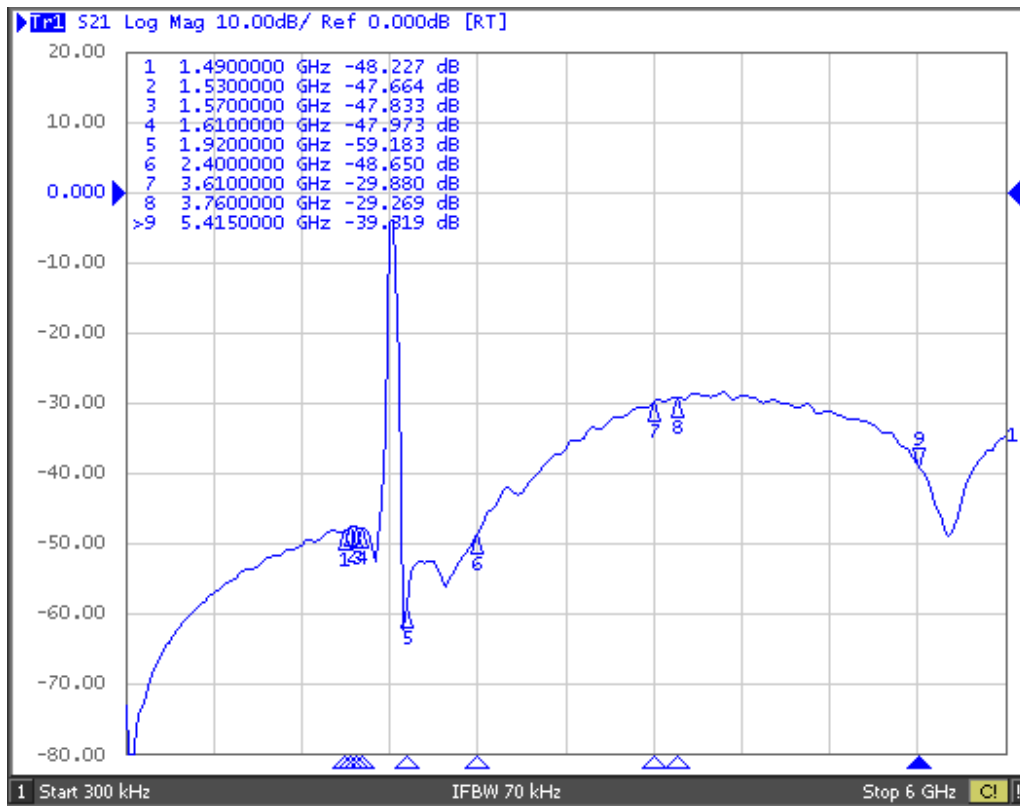
| Item | Minimum | Typical | Maximum | Unit |
|--|---------|---------|---------|----------|
| Center Frequency f_c | | 1817.5 | | MHz |
| Insertion Loss | | | | |
| 1805 MHz1830 MHz | -- | 3.0 | 3.5 | Db |
| Source Impedance(single ended) ⁽¹⁾ | | 50 | | Ω |
| Load Impedance(single ended) ⁽¹⁾ | | 50 | | Ω |
| Absolute Attenuation α | | | | |
| DC 1710 MHz | 20 | 25 | | dB |
| 1710 1735 MHz | 25 | 30 | | dB |
| 1735 1770 MHz | 20 | 25 | | dB |
| 1850 1920 MHz | 10 | 15 | | dB |
| 1920 2000 MHz | 25 | 30 | | dB |
| 2000 3500 MHz | 25 | 30 | | dB |
| Amplitude Ripple (p-p) in 1805 MHz1830 MHz $\Delta\alpha$ | | 0.8 | 1.2 | dB |
| VSWR in 1805 MHz1830 MHz | | 2.0 | 2.5 | |
| Input / Output Impedance (Nominal) | | 50 | | Ω |

RoHS Compliant

Electrostatic Sensitive Device

Typical Frequency Response





Stability Characteristics

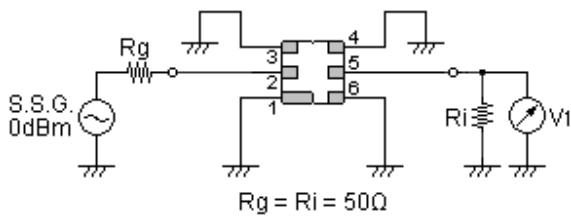
| | Test item | Condition of test |
|---|---------------------------|--|
| 1 | Mechanical shock | (a) Drops: 3 times on concrete floor (b) Height: 1.0 m |
| 2 | Vibration resistance | (a) Frequency of vibration: 10~55Hz (b) Amplitude: 1.5 mm (c) Directions: X,Y and Z (d) Duration: 2 hours |
| 3 | Moisture resistance | (a) Condition: 40°C ± 2°C , 93 ⁺² / ₋₃ % RH. (b) Duration: 96 hours (c) Wait 4 hours before measurement |
| 4 | Climatic sequence | (a) +70°C for 16 hours (b) +55°C for 24 hours, 90~95% R.H. (c) -25°C for 2 hours (d) +40°C for 24 hours, 90~95% R.H. (e) Wait 4 hours before measurement |
| 5 | High temperature exposure | (a) Temperature: 85°C (b) Duration: 250 hours (c) Wait 4 hours before measurement |
| 6 | Temperature cycling | (a) +85°C for 30 minutes ⇒ -40°C for 30 minutes repeated 120 times (b) Wait 4 hours before measurement |

Requirements: The SAW filter shall remain within the electrical specifications after tests.

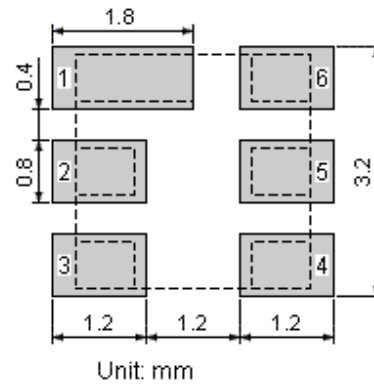
Remarks

- SAW devices should not be used in any type of fluid such as water, oil, organic solvent, etc.
- Be certain not to apply voltage exceeding the rated voltage of components.
- Do not operate outside the recommended operating temperature range of components.
- Sudden change of temperature shall be avoided, deterioration of the characteristics can occur.
- Be careful of soldering temperature and duration of components when soldering.
- Do not place soldering iron on the body of components.
- Be careful not to subject the terminals or leads of components to excessive force.
- SAW devices are electrostatic sensitive. Please avoid static voltage during operation and storage.
- Ultrasonic cleaning shall be avoided. Ultrasonic vibration may cause destruction of components.

Test Circuit

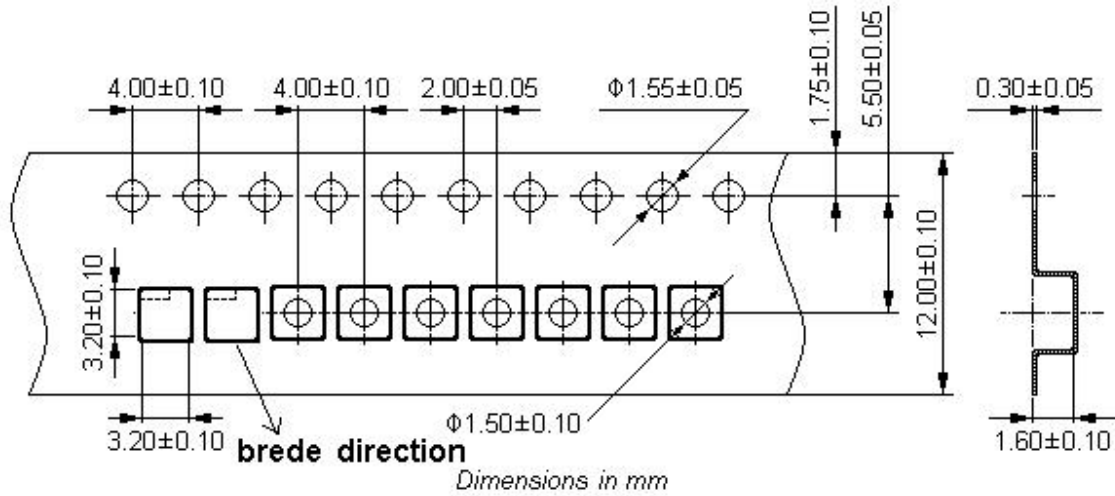


Recommended Land Pattern

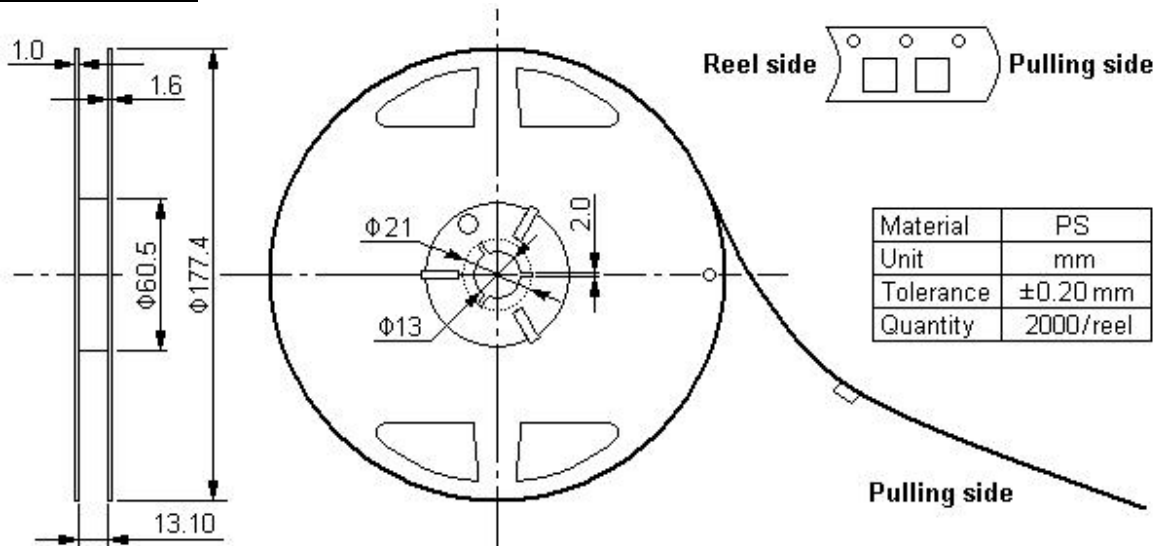


Packing Information

Carrier Tape



Reel Dimensions



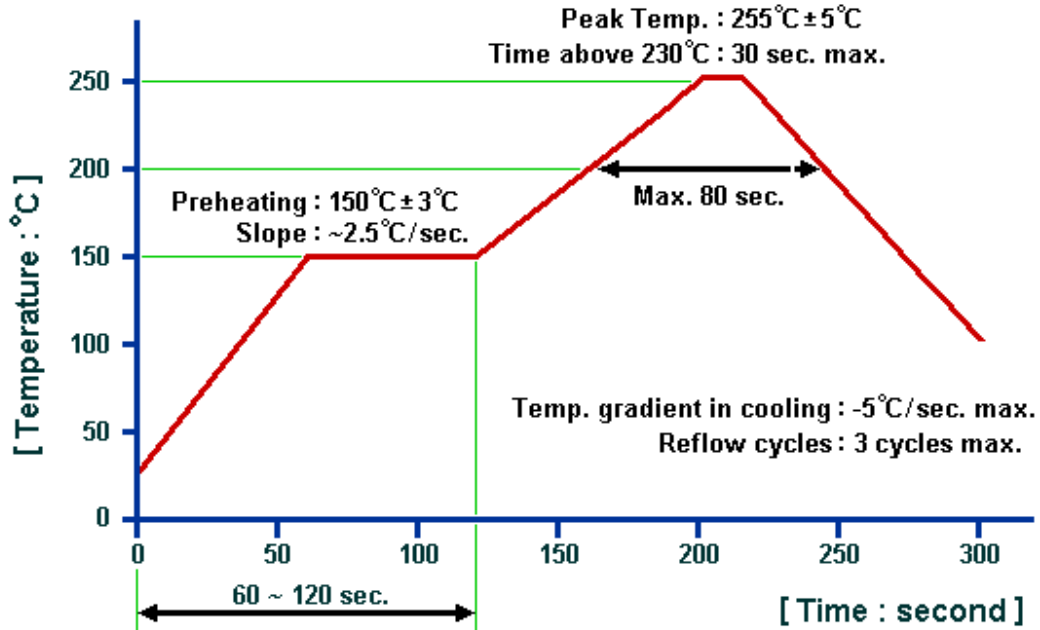
Outer Packing

| Type | Quantity | Dimension | Description | Weight |
|---------------|----------|-------------|---|--------|
| Carton Box I | 10000 | 190×190×95 | anti-static plastic bag & carton box 1 reel / bag | 0.85 |
| Carton Box II | 20000 | 190×190×190 | 5 bags / box (10000 pcs) 10 bags / box (20000 pcs) | 1.80 |

Unit: mm

Unit: kg

Recommended Soldering Profile



© NEDI 2012. All Rights Reserved.

1. The specifications of this device are subject to change or obsolescence without notice.
2. Typically, equipment utilizing this device requires emissions testing and government approval, which is the responsibility of the equipment manufacturer.
3. Our liability is only assumed for the Surface Acoustic Wave (SAW) component(s) per se, not for applications, processes and circuits implemented within components or assemblies.
4. For questions on technology, prices and delivery, please contact our sales offices or e-mail winnsky@winnsky.com