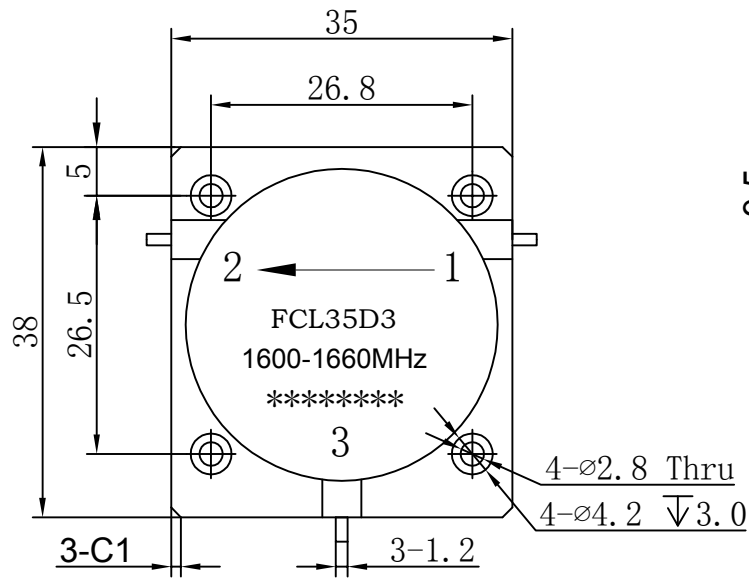




Drop-in Circulator

FCL35D3 1600-1660MHz



- Note:
- 1.Tolerances:  $\pm 0.20$ mm
  - 2.Material  
BODY: Steel  
TAB: BeCu
  - 3.Surface Treatment  
BODY: Nickel plate  
TAB: Silver Plated

Item	Unit	Specification	Note
Freq.Range	MHz	1600-1660	
Direction		CCW/Left	
Operating Temperature	$^{\circ}\text{C}$	-40~+85	
Insertion Loss	dB max	0.18	Room Temp (+25 $^{\circ}\text{C} \pm 10^{\circ}\text{C}$ )
	dB max	0.18	Over Temp (-40 $^{\circ}\text{C} \sim +85^{\circ}\text{C}$ )
Isolation	dB min	23	Room Temp (+25 $^{\circ}\text{C} \pm 10$ )
	dB min	23	Over Temp (-40 $^{\circ}\text{C} \sim +85^{\circ}\text{C}$ )
Return Loss	dB min	23	Room Temp (+25 $^{\circ}\text{C} \pm 10$ )
	dB min	23	Over Temp (-40 $^{\circ}\text{C} \sim +85^{\circ}\text{C}$ )
Avg Power	W	500	
Impedance	$\Omega$	50	

Customer suggestion and confirmation:

Signature:

Date:

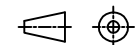
Design: Colin

Format Scale Version

A4 1:1 A

Date: 2020.1.7

Page 1, Total 1



Unit: mm

www.winnsky.com